



**Inventory number: 20616**

**Jig grinding machine CNC**  
**HAUSER S 35-600**



### Technical data

Table length	600 mm
Table width	380 mm
Longitudinal travel (X-axis)	500 mm
Transversal travel (y axis)	300 mm
1 column execution	
Travel of the vertical slide	450 mm
Passage from grinding motor to table	485 mm
Max. grinding diameter	230 mm
with display-plate	360 mm
Stroke of spindle-nose	340 mm
Max. angle with taper grinding:	
up to	16 °
Vertical travel of grinding spindle:	
stepless from	1 mm
up to	110 mm
Travel speeds:	
stepless	
from	0.5 m/min
up to	12.0 m/min
Planetary motion speeds: c axis	
stepless	
from	5 rpm
up to	250 rpm
Voltage 50 Hz 3x	380 Volt
Spindle motor	7.5 kW
Machine's weight about	4000 kg

Overall dimensions machine:

Length	2700 mm
Width	1700 mm
Height	2850 mm

Various accessories:

Coolant system

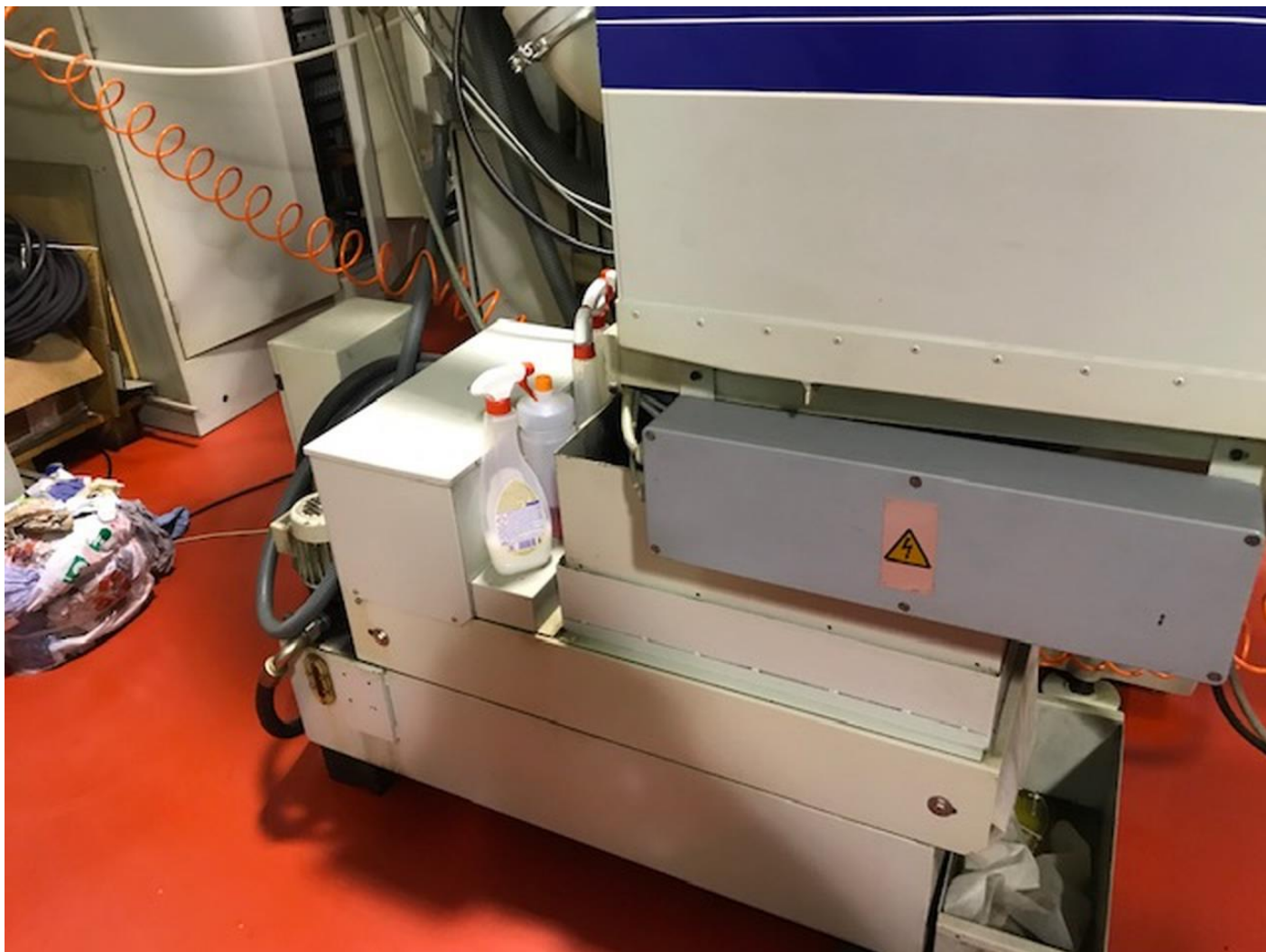
Paper filter facility

Oil mist extractor











167715

# HAUSER

Typ:

S35-600

Serie No:

S352084